



1-866-99-AGPRO

www.ag-processing.com

Manuer Spreader Specifications

Features:

- Totally Hydraulic: Beaters and Floor
- Variable Speed Floor Control
- Dedicated Beater Hydraulic System
- Safety Interlock: Floor won't move w/o Beaters running & Slop Gate up
- Removable Beater Assembly
- Tapered Box: 1.5" wider at rear
- Bolt on Beater Stub Shafts
- USA Made Drive D667KC Floor Chain
- USA Made Dodge Bearings
- Nylatron Bushing on Final Drive
- Beater Panels for 2 or 3 Beaters

Specs:	MS1800	MS2000
Length w/ Beaters:	20' 1"	22' 1"
Inside Floor Length	17'	19'
Cu ft w/ 38" Sides:	415	462
Cu ft w/ 16" Ext.:	603	673
Weight Empty	8,500 lbs	
Width Inside	90" Front to 91.5" Rear	
Width Outside:	102"	
Side Height on 44" Truck:	94.5"	
Height Side Inside:	38" or 54" with 16" Ext	
Height Headboard:	62" Inside / 118.5" Mounted	



Floor Drive:	
Variable Speed:	0 to 30 ft/min
Final Drive:	2 1/4" Stress Proof Shaft
Final Drive Bearings:	4 Nylatron Bushings
Drive Sprocket :	Welded 6 Tooth Steel
Idler Sprocket:	6 Tooth Steel with Bearing
Floor Chain:	USA Drive D667KC Chain with 3/16" X 21" slat
Drive Chain:	Hardened Sprockets
Hardened Sprockets	0 to 30 ft/min



Hydraulics:	
Dual Floor Drive Motor	Char Lyn 2000 Series on each end of Final Drive Shaft
Beater Drive Motor:Reiner	Reiner High Starting Torque
Pump:	Tandem Parker-Denison Directly Mounted to PTO
Hydraulic Reservoir:	70 gal
Hydraulic Cooling:	Oil Cooler



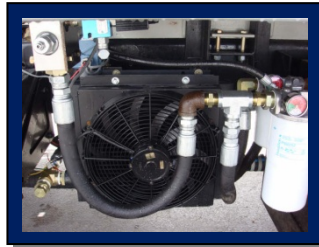
Service:

Floor Chain, Drive Shaft, Bearings and Motors interchange with AgPro Live Floor Trailer
 Floor Chain Tensioner located on front of box
 Oil level and temp indicator on tank
 Oil Pressure taps for diagnostics
 Accessible Beater Bearings
 Replaceable Beater Stub Shaft
 Replaceable Beater Teeth
 Accessible Motors for Floor and Beaters
 No Drive lines: Pump mounts directly to PTO



Standard Equipment:

Oil Cooler
 Electric in Cab Controls
 Variable Speed Floor
 Kick Out Beaters
 Tail Pan
 3 Apron Chains
 2 Beaters



Box:	
Top Rails:	3" x 3" x 3/16" Tubing
Frame Rails:	5" x 3/16" Channel
Stringers:	3" x 3/16" Channel
Skirt:	7 Gauge Steel
Floor:	10 Gauge Steel
Walls:	14 Gauge Steel

Truck Requirements:	
Frame:	Steel Double Frame
Front Axle:	14,000 lb to 16,000 lb
Rear Axle:	40,000 lb
Horse Power:	300 HP Min
Transmission:	8 Bolt PTO Hole
PTO:	90%, 8 Bolt w/ 2 bolt C Flange & 1 1/4 Hole w/ 14 Spine, 90 HP
Cab to Trunion w/ 8" clearance:	18' - 134" 20' - 156"
After Frame:	18' - 60" 20' - 72"

Options:

3rd Beater
 Slop Gate
 16" Side Extensions
 Silage Sides
 Plastic Floor Liner
 Plastic Side Liners
 Installation



Beaters:	
Beater Side Panels:	10 Gauge Steel w/ holes for 2 or 3 beaters
Beater:	4" SCH 80 Pipe w/ Bolt on Flange Stub Shafts
Beater Teeth:	1/2" AR400 Abrasion Resistant Steel
Beater RPM:	Top-240, Middle-310, Bottom-380

